

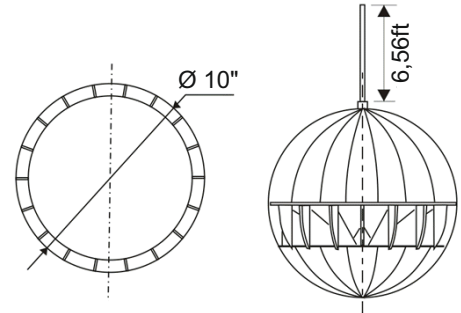
**ELECTRICAL PERFORMANCE**

System Type:	1 way
Frequency Response:	130 - 15kHz
Sensitivity:	92 ± 3dB
Power Handling:	20W
Power Taps:	5 / 10 / 20W
Line Input:	100V

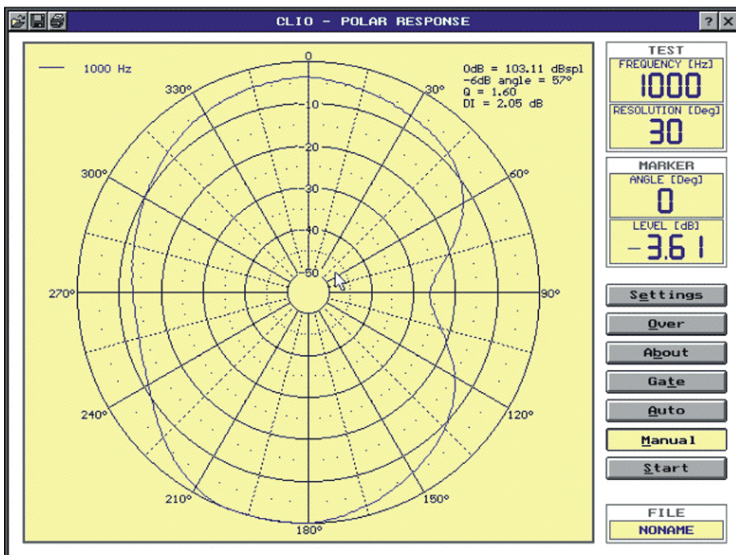
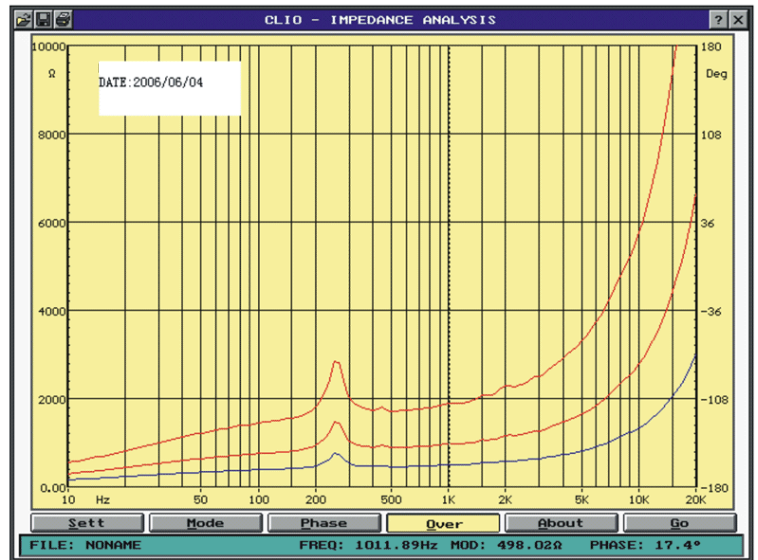
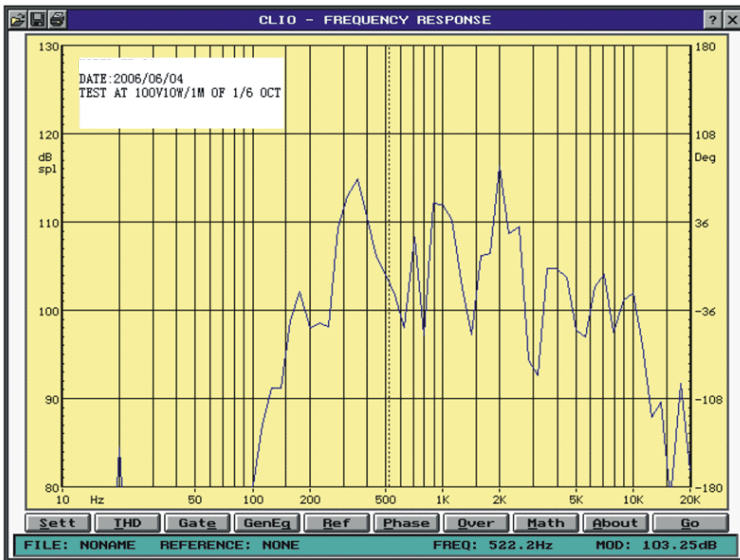
**PHYSICAL SPECIFICATIONS**

Material:	ABS
Dimensions:	diam. 10"
Cable included	6,56ft
Component:	8"
Mounting:	Pendant Hung
Unit Weight:	4,85lbs

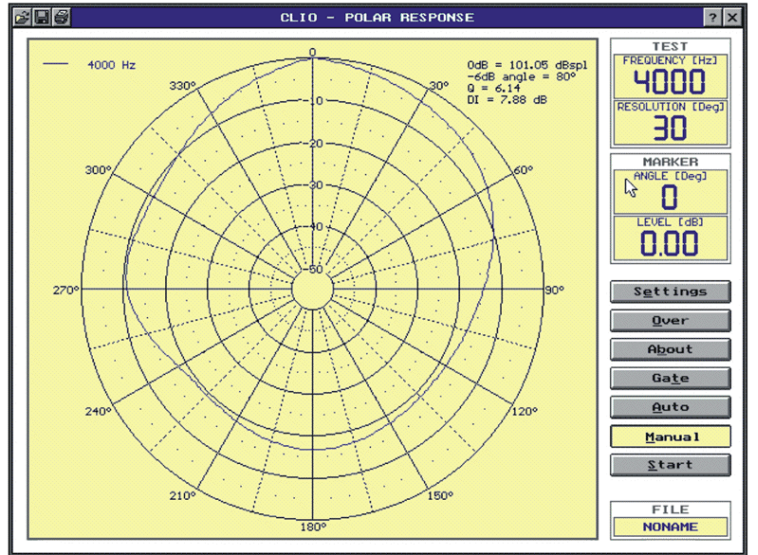
**SPHERICAL SPEAKER**



FBT Elettronica S.p.A. reserves the right to make changes to drawings and specifications at any time and without notice.



1000Hz



4000Hz